



19 Carisbrooke Drive  
Nottingham NG3 5DS  
+44(0)115 9607951

ACTION P80S Condor 20A ESC

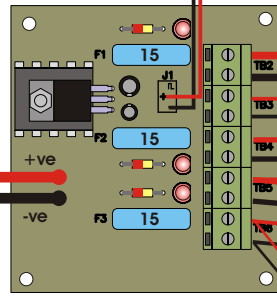
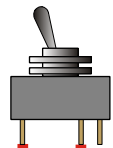
T12 motor

© Action R/C Electronics

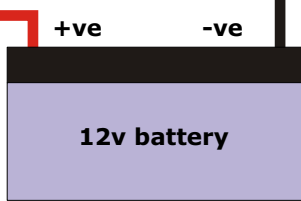
Rx Throttle Ch

Rx Power Input ("Batt")

Main Power ON/OFF



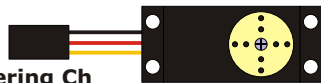
P102 Power D/B



12v battery

Rx Steering Ch

Rudder Servo



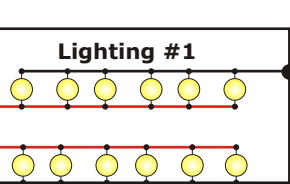
Rx Spare Propo Ch\*

P44 Twin Switch



Lighting #1

Lighting #2



Rx Spare Propo Ch\*

2A switch



M7G motor/gearbox kit

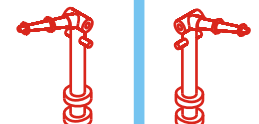


\* Must be proportional channels (not "Gear" switch)

ACTION P91 Hi-Load Twin Switch



Graupner 12v Pump #1951

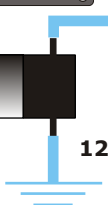


Fire Monitors

PWM motor speed regulator



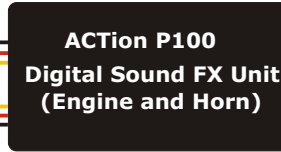
12v Cooling-water Pump



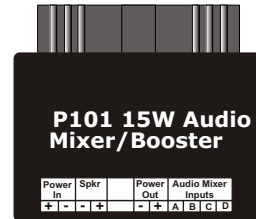
%!\* Old Smokey



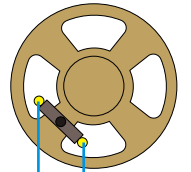
ACTION P100 Digital Sound FX Unit (Engine and Horn)



P101 15W Audio Mixer/Booster



8Ω x 100mm speaker



SUGGESTED INSTALLATION OF ACTION UNITS IN "FLYING PHANTOM" TUG FOR MR JOHN BRADFORD

Drawn by Dave Millbourn